

Contact person RISE
Fredrik Wångsell
Chemistry and Materials
+46 10 516 65 54
fredrik.wangsell@ri.se

Date
2020-11-11

Reference
O100152/110281B

Page
1 (5)

JAWPEER AB
Peer Nordbäck
Björkhagsvägen 75
186 35 Vallentuna

Determination of cyclic siloxane content in silicone samples

Assignment

GCMS Chromatogram of the samples, see report O100152/14889 and O100152/110281 for more details.



Figure 1.

RISE Research Institutes of Sweden AB

Postal address
Box 857
SE-501 15 BORÅS
Sweden

Office location
Brinellgatan 4
SE-504 62 BORÅS

Phone / Fax / E-mail
+46 10 516 50 00
+46 33 13 55 02
info@ri.se

This document may not be reproduced other than in full,
except with the prior written approval of RISE.

Chromatogram

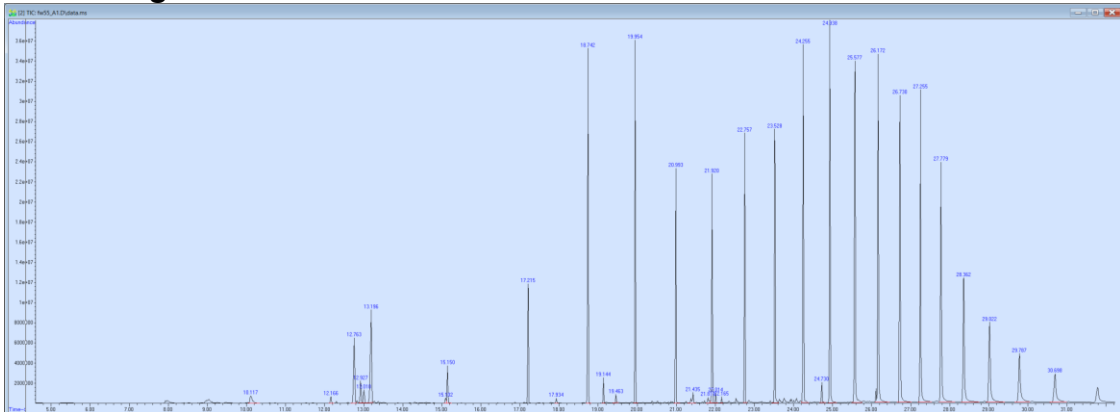


Figure 2. Sample A, grey.
Retention time (RT) 12.7 min, Isomenthone (CAS: 491-07-6)
RT 13.2 min, Levomenthol (CAS: 2216-51-5)

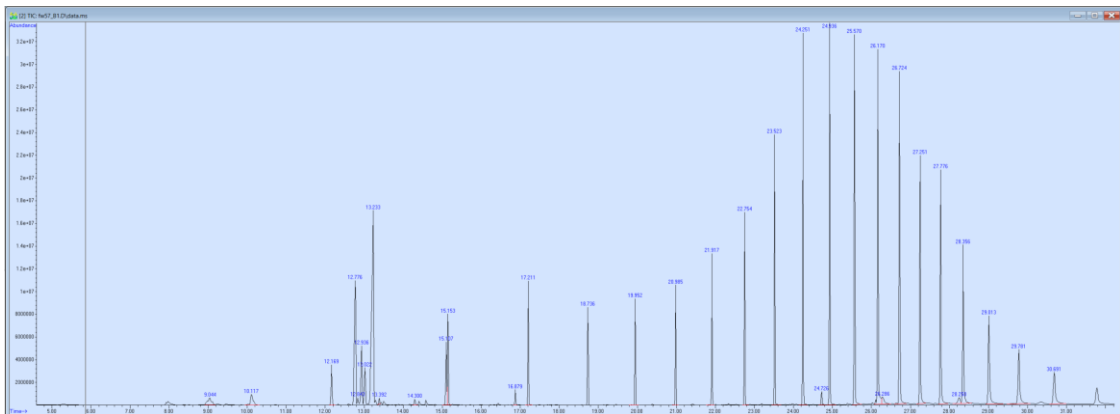


Figure 3. Sample B, black.
RT 12.7 min, Isomenthone (CAS: 491-07-6)
RT 13.2 min, Levomenthol (CAS: 2216-51-5)
RT 15,1 min, Isomenthol acetate (CAS: 20777-45-1)

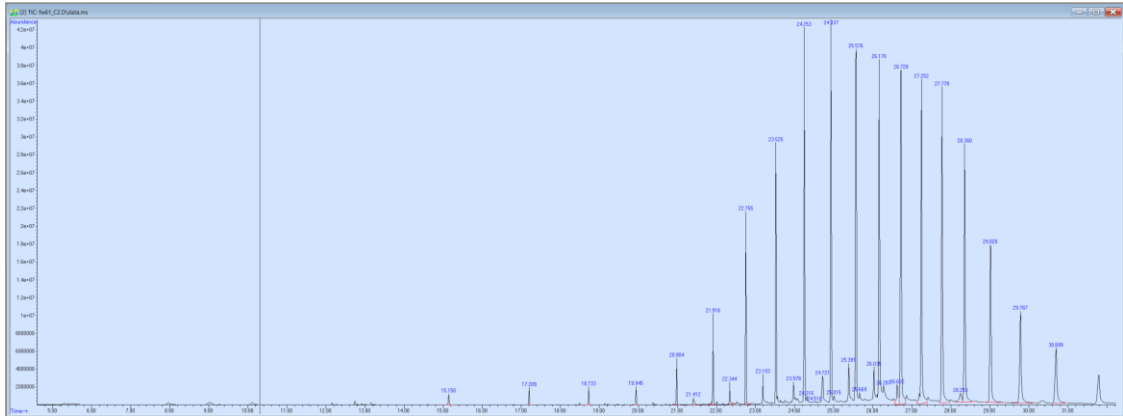


Figure 4. Sample C, transparent.

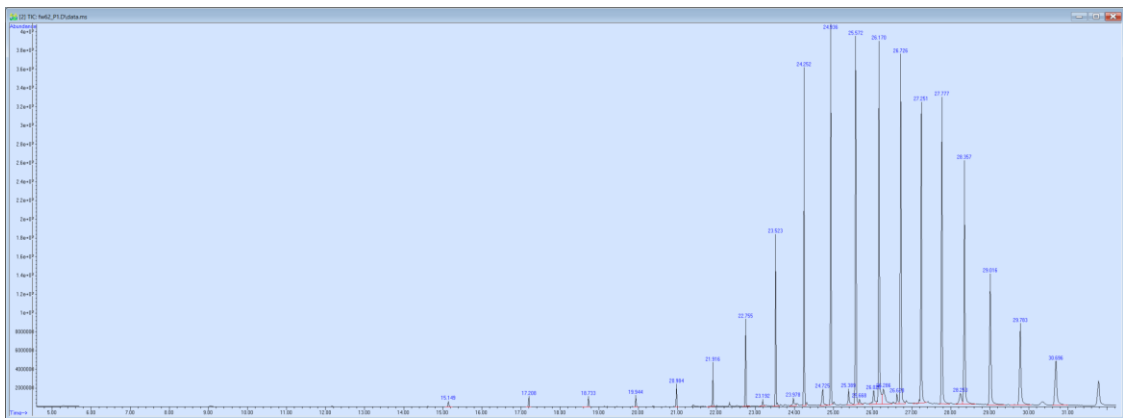


Figure 5. Sample 1, transparent, large.

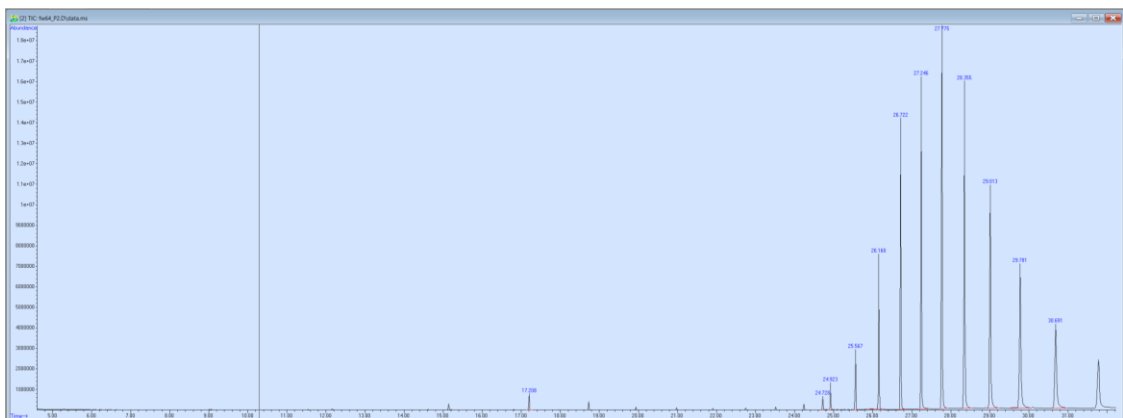


Figure 6. Sample 2, green, small.

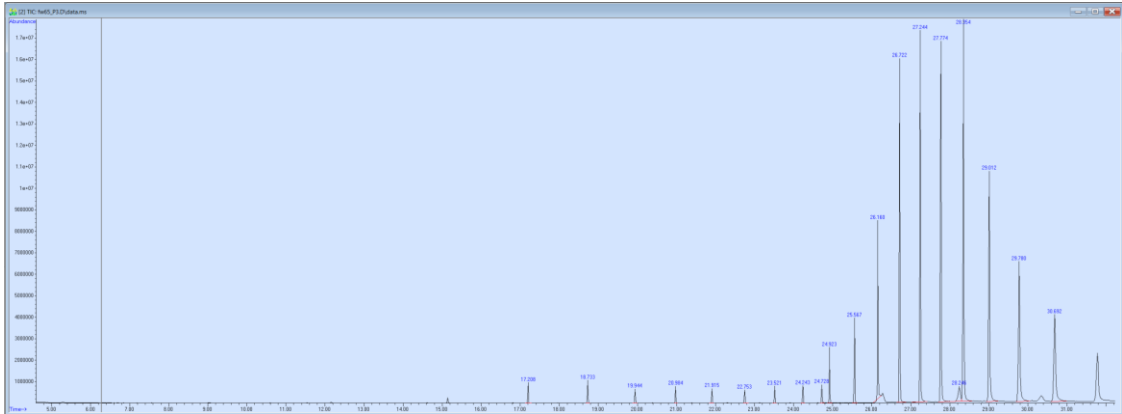


Figure 7. Sample 3, blue, small.

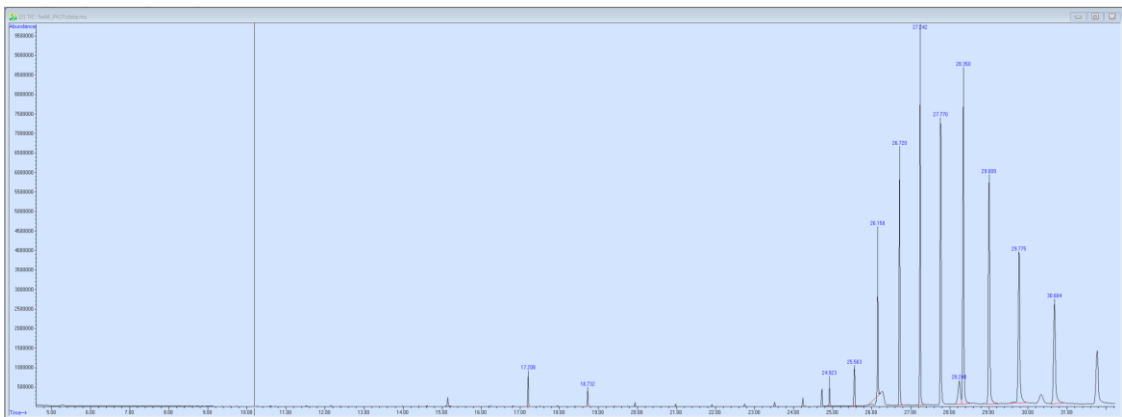


Figure 8. Sample 4, transparent, small.

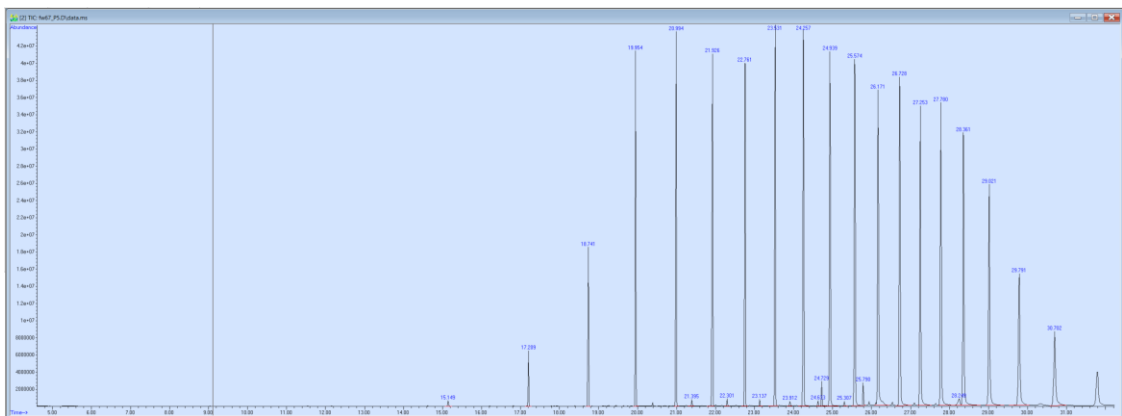


Figure 9. Sample 5, grey.

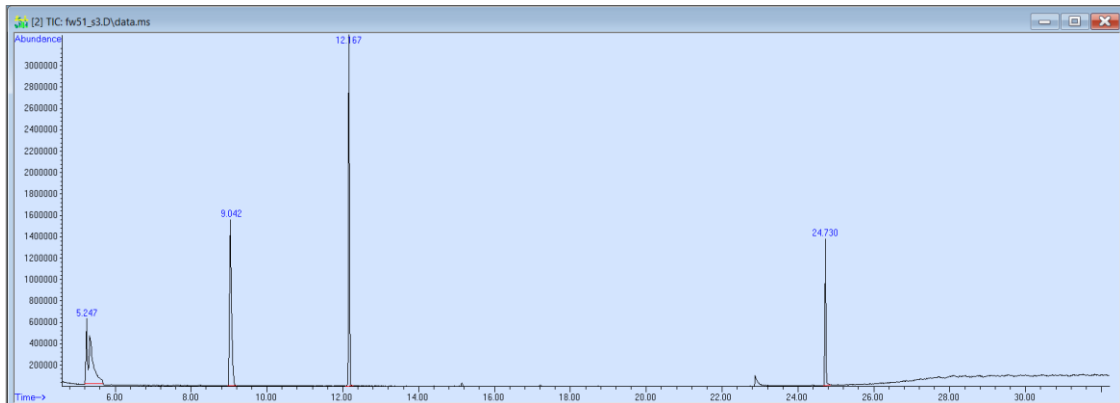


Figure 10. One D3, D4, D5 standard.

RT 5,2 min D3

RT 9,4 min D4

RT 12,2 min D5

Missing D6, RT 15,1 min

RISE Research Institutes of Sweden AB
Chemistry and Materials - Chemistry

Performed by

Examined by

Fredrik Wångsell